

# CESAB Electric Counterbalanced Trucks

The CESAB B Range



# CESAB B200II

24-VOLT 3-WHEEL TRUCK



Compact design ideal in  
space-restricted areas

1.0 – 1.5 TONNES LOAD CAPACITIES  
TRAVEL SPEED UP TO 12.5 KM/H  
BATTERY CAPACITY UP TO 875 AH

P. 2-5

# CESAB B3 B4

48-VOLT 3 & 4-WHEEL TRUCK



Versatile all-round trucks for light  
to more intense use

1.5 – 2.0 TONNES LOAD CAPACITIES  
TRAVEL SPEED UP TO 20 KM/H  
BATTERY CAPACITY UP TO 750 AH

P. 6-13

# CESAB B3 B4 Lithium-ion

48-VOLT 3 & 4-WHEEL TRUCK



Trucks with integrated li-ion battery offering  
class-leading ergonomics for light  
to intense operations

1.6 – 2.0 TONNES LOAD CAPACITIES  
TRAVEL SPEED UP TO 20 KM/H  
BATTERY CAPACITY UP TO 420 AH

P. 14-17

# CESAB B600II

80-VOLT 4-WHEEL TRUCK



Robust and durable design for the toughest environments, both indoors and outdoors

2.0 – 3.5 TONNES LOAD CAPACITIES  
TRAVEL SPEED UP TO 20 KM/H  
BATTERY CAPACITY UP TO 775 AH  
P. 18-21

# CESAB B6

80-VOLT 4-WHEEL TRUCK



A tough design to handle heavy loads or multiple pallets safely and quickly

3.5 – 5.0 TONNES LOAD CAPACITIES  
TRAVEL SPEED UP TO 20 KM/H  
BATTERY CAPACITY UP TO 775 AH  
P. 22-25

# CESAB B800II

HIGH-CAPACITY 80-VOLT 4-WHEEL TRUCK



Class-leading strong, high-performance trucks – perfect for heavy-duty applications

6.0 – 8.0 TONNES LOAD CAPACITIES  
TRAVEL SPEED UP TO 20 KM/H  
BATTERY CAPACITY UP TO 1240 AH  
P. 26-29



# CESAB

## B200II

The B200II models are compact 3-wheel trucks designed for simple, straightforward applications. These trucks are manoeuvrable in the tightest areas and ideal for narrow aisle stacking. Compact yet versatile, these driver-friendly trucks are at home in factories, warehouses and shops – where their size and flexibility make them ideally suited to a wide variety of material handling applications.

## SPECIFICATIONS

**Load capacity:** 1.0, 1.25, 1.5 t @ 500 mm load centre

**Maximum lift height:** 6.5 m

**Maximum travel speed:** 12.5 km/h

**Maximum battery capacity:** 875 Ah

**Options available:**   

**isd**  
intelligent stability design





Excellent visibility through the mast with low dashboard including built-in display with essential driver information and functions.



Despite truck's compactness, operator enjoys a comfortable driver compartment, with sufficient legroom and easy access to controls for efficient operations.



Compact 3-wheel truck, easy-to-drive in confined areas and stack in narrow aisles.



Available with intelligent energy packs based on CESAB own energy -efficient Lithium-ion battery solutions and chargers.

● standard ○ option

**Load handling**

	Safety	Robustness	Performance	Durability	B210II	B213II	B215II
Wide Visible Mast (V)	●				●	●	●
Full-free (twin cylinder) 2-stage mast (FW) - IMD					○	○	○
Full-free (twin cylinder) 3-stage mast (FSW) - IMD					○	○	○
Full-free (central cylinder) 2-stage mast (FV)					○	○	○
Full-free (central cylinder) 3-stage mast (FSV)					○	○	○
Fully-oil-charged lift cylinder		●			○	○	○
Shockless landing lift					●	●	●
Integrated sideshift			●		○	○	○

**Lights and indicators**

	Safety	Robustness	Performance	Durability	B210II	B213II	B215II
LED headlights	●				○	○	○
LED front combination lights					○	○	○
LED rear combination lights					○	○	○
LED rear/double rear working light					○	○	○
Blue LED (front/rear) warning light					○	○	○
Flashing beacon lamp					○	○	○
Back-up buzzer					○	○	○

**Body**

	Safety	Robustness	Performance	Durability	B210II	B213II	B215II
Low- large step (both sides) + large hand grip	●	●	●		●	●	●
Full hydraulic power steering incl. Steering synchroniser					●	●	●
Digital multifunction display (wheel indicator)	●				●	●	●
Adjustable steering column					●	●	●
Rear view mirror (right and left side)					○	○	○
Panoramic rear view mirror					○	○	○
Fabric seat (Grammer MSG20)					○	○	○
PVC seat (Grammer MSG20)					●	●	●
Fully adjustable ORS seat	●				○	○	○
Fully adjustable fabric ORS seat	●	●	●		○	○	○
Left hand shift lever					○	○	○
Car pedal layout					●	●	●
D2 pedal					○	○	○
Driver side levers with direction switch					●	●	●
Seat mounted hydraulic minilevers inc. Fork levelling switch					○	○	○
Seat mounted multifunction levers inc. Fork levelling switch					○	○	○

● standard ○ option

**Body**

	Safety	Robustness	Performance	Durability	B210II	B213II	B215II
Plastic top panel	●				○	○	○
Front windshield and roof					○	○	○
Cabin w/o doors					○	○	○
Canvas cabin					○	○	○
Mast tilt indicator					●	●	●
Max speed and acceleration reduction with lifted load					○	○	○
Pin code entry system			●		○	○	○
Shock sensor	●	●			○	○	○
A4 size binder					○	○	○
12V power supply (cigar lighter adapter)					○	○	○

**Safety features**

	Safety	Robustness	Performance	Durability	B210II	B213II	B215II
CESAB ISD (Intelligent Stability Design)	●	●	●	●	●	●	●
Operator Presence Sensing System (OPS)	●				●	●	●
Emergency button	●				●	●	●
Low speed setting (turtle)	●				●	●	●

**Tyres**

	Safety	Robustness	Performance	Durability	B210II	B213II	B215II
Pneumatic shaped cushion tyres					○	○	○
Non-marking pneumatic shaped cushion tyres					○	○	○

**Maintenance features**

	Safety	Robustness	Performance	Durability	B210II	B213II	B215II
Rugged exterior body and easy access for maintenance		●			○	○	○
Maintenance hour meter		●			○	○	○

**Battery management features**

	Safety	Robustness	Performance	Durability	B210II	B213II	B215II
Battery lift-out			●		○	○	○

**Special applications**

	Safety	Robustness	Performance	Durability	B210II	B213II	B215II
Coldstore specification (-25°C)		●	●		○	○	○
Low overhead guard (1980 mm)			●		○	○	○

**Compact and easy-to-drive**

The CESAB B200II electric counterbalanced truck is extremely compact 3-wheel chassis machine, designed for simple, straightforward applications. It is easy to drive in confined spaces and narrow aisles.

**Driver comfort**

Despite the truck's compactness, the operator can enjoy a comfortable driving position thanks to the redesigned low dashboard, which not only frees up forward visibility but also includes essential driver information for precise operation.

**Intelligent energy packs**

CESAB B200II electric trucks are available with different intelligent energy packs to fit every customer's application requirements. Based on CESAB's own energy-efficient lithium-ion battery solutions, allowing costs savings and CO2 emissions reduction.

**ISD - Intelligent Stability Design**

All B200II electric trucks are standard equipped with CESAB's unique Intelligent Stability Design (ISD). It ensures excellent forklift stability by protecting the operator and load when driving, turning and lifting. ISD provides advanced technology increasing safety and improving productivity.

**IMD - Intelligent Mast Design**

All B200II electric trucks are available with CESAB's unique Intelligent Mast Design technology, which provides an industry leading level of visibility through the use of two off-set free lift cylinders. Further all piping, hoses and cables are integrated within the uprights.



# CESAB

## B3 - 3 WHEELS

Manoeuvrability is key to the design of the B3 3-wheel electric counterbalanced truck. It offers exceptional agility and a narrow aisle width, ensuring smooth operation. Whether navigating narrow pallet racking indoors or handling tasks in the yard or loading bay, the B3 offers seamless versatility while offering drivers maximum comfort. The CESAB B3 standard range is available with conventional lead-acid battery (LAB) or lithium-ion battery (LIB) allowing for energy-efficient operations.

## SPECIFICATIONS

**Load capacity:** 1.5, 1.6, 1.8, 2.0 t @ 500 mm load centre

**Maximum lift height:** 7.5 m

**Maximum travel speed:** 16 km/h

**Choice of energy solution:** Lead-acid (up to 750Ah), Lithium-ion (up to 630Ah)

**Options available:**   

**isd**  
intelligent stability design





The conventional model can be equipped with lithium-ion battery. An easy access to battery plug on lateral door allows for easy, quick and safe opportunity charging.



LED front combination lights improve safety in the workplace and allow to work efficiently in unlit areas and/or at night.



Different pedal layouts are available to fit drivers' preferences. Double accelerator pedals allow the operator to change driving direction with the feet.



Increasing driver comfort with the new tiltable and telescopic steering column, which enhance the space for the operator.

● standard ○ option

**Load handling**

	Safety	Robustness	Performance	Durability	B3-15	B3-16	B3-16L	B3-18	B3-18L	B3-20
Wide Visible Mast (V)	●			●	●	●	●	●	●	●
Full-free (twin cylinder) 2-stage mast (FW) - IMD				○	○	○	○	○	○	○
Full-free (twin cylinder) 3-stage mast (FSW) - IMD				○	○	○	○	○	○	○
Full-free (central cylinder) 2-stage mast (FV)				○	○	○	○	○	○	○
Full-free (central cylinder) 3-stage mast (FSV)				○	○	○	○	○	○	○
Fully oil-charged lift cylinder		○		○	○	○	○	○	○	○
Shockless landing lift		○	●	●	●	●	●	●	●	●
Hydraulic cushioned forks				○	○	○	○	○	○	○
Hydraulic accumulator (full charge)				○	○	○	○	○	○	○
Integrated sideshift				○	○	○	○	○	○	○
Fork positioner				○	○	○	○	○	○	○
Quick couplings				○	○	○	○	○	○	○

**Lights and indicators**

	Safety	Robustness	Performance	Durability	B3-15	B3-16	B3-16L	B3-18	B3-18L	B3-20
LED front combination lights	●	○		○	○	○	○	○	○	○
LED rear combination lights	●	○		○	○	○	○	○	○	○
LED headlights	●			○	○	○	○	○	○	○
LED rear/double working light	○			○	○	○	○	○	○	○
Blue LED rear warning light				○	○	○	○	○	○	○
Yellow beacon (Flashing, Rotary)				○	○	○	○	○	○	○
Back-up buzzer	○			○	○	○	○	○	○	○
Horn in armrest	●			●	●	●	●	●	●	●

**Body**

	Safety	Robustness	Performance	Durability	B3-15	B3-16	B3-16L	B3-18	B3-18L	B3-20
Low and large step on left side + large hand grip	○	○		○	○	○	○	○	○	○
Electric Power steering inc. Steering synchroniser	○	○		○	○	○	○	○	○	○
Digital multifunction display with wheel indicator	○			○	○	○	○	○	○	○
Multifunction touchscreen display	○	○		○	○	○	○	○	○	○
Mast tilt indicator	○			○	○	○	○	○	○	○
Load weight indicator	○			○	○	○	○	○	○	○
Adjustable tilt steering column	○			○	○	○	○	○	○	○
Wet disk brakes	○	○		○	○	○	○	○	○	○
Rear view mirror, left and right side	○			○	○	○	○	○	○	○
Flat/Panoramic internal rear view mirror	○			○	○	○	○	○	○	○
Seat mounted hydraulic minilevers inc. Fork levelling switch	○	○		○	○	○	○	○	○	○
Seat mounted Multifunction Lever inc. Fork levelling switch	○	○		○	○	○	○	○	○	○
Multifunction Joystick	○			○	○	○	○	○	○	○
Car pedal layout with wide brake pedal	○			○	○	○	○	○	○	○
D2 pedal	○			○	○	○	○	○	○	○
Adjustable telescopic steering column	○			○	○	○	○	○	○	○
Full floating driver's compartment	○	○		○	○	○	○	○	○	○

● standard ○ option

**Body**

	Safety	Robustness	Performance	Durability	B3-15	B3-16	B3-16L	B3-18	B3-18L	B3-20
Battery door opening sensor	○			○	○	○	○	○	○	○
Double accel pedal	○			○	○	○	○	○	○	○
ORS seat (Operator Restrain System)	○			○	○	○	○	○	○	○
Fully adjustable fabric ORS seat	○	○		○	○	○	○	○	○	○
Shock sensor	○			○	○	○	○	○	○	○
Height selector	○			○	○	○	○	○	○	○
Pin code entry system	○			○	○	○	○	○	○	○
Automatic Parking Brake	○			○	○	○	○	○	○	○
Heater	○			○	○	○	○	○	○	○
Tilt cylinder boots	○	○		○	○	○	○	○	○	○
Steel cabin	○			○	○	○	○	○	○	○
Cabin without doors	○			○	○	○	○	○	○	○
Canvas cabin	○			○	○	○	○	○	○	○
Front windshield with wiper & roof	○			○	○	○	○	○	○	○
Body guard	○			○	○	○	○	○	○	○
Rear assist grip with horn button	○			○	○	○	○	○	○	○

**Safety features**

	Safety	Robustness	Performance	Durability	B3-15	B3-16	B3-16L	B3-18	B3-18L	B3-20
CESAB ISD (Intelligent Stability Design)	○	○	○	○	○	○	○	○	○	○
Operator Presence Sensing System (OPS)	○			○	○	○	○	○	○	○
Max speed and acceleration reduction with lifted load	○			○	○	○	○	○	○	○
Emergency stop button in armrest	○			○	○	○	○	○	○	○

**Maintenance & management features**

	Safety	Robustness	Performance	Durability	B3-15	B3-16	B3-16L	B3-18	B3-18L	B3-20
Rugged exterior body and easy access for maintenance	○	○		○	○	○	○	○	○	○

**Battery management features**

	Safety	Robustness	Performance	Durability	B3-15	B3-16	B3-16L	B3-18	B3-18L	B3-20
Lateral battery extraction with open bottom chassis	○		○	○	○	○	○	○	○	○

**Special applications**

	Safety	Robustness	Performance	Durability	B3-15	B3-16	B3-16L	B3-18	B3-18L	B3-20
Cold storage model (TYPE 30S)	○	○		○	○	○	○	○	○	○
Rustproof model	○	○		○	○	○	○	○	○	○
Fisherman model	○	○		○	○	○	○	○	○	○
Drive in rack overhead guard	○			○	○	○	○	○	○	○
High overhead guard	○			○	○	○	○	○	○	○
Low overhead guard	○			○	○	○	○	○	○	○

**Unparalleled performance**

The StaminaTune from CESAB enables energy consumption reduction and enhanced performance thanks to the combination of IPM (Interior Permanent Magnet) synchronous motor for traction and our advanced controllers. Additionally, the optional high-performance motor for lifting allows for extra productivity and extra energy efficiency.

**Driver comfort**

Operator comfort is key to maximising productivity. The CESAB B3 features a fully floating driver compartment that reduces vibrations. Operators can enjoy a comfortable driving position with extra leg and foot space, a slim steering wheel, and an optional intuitive touchscreen that provides important information at a glance. Additionally, the design offers open visibility through the roof and mast.

**Energy efficiency**

CESAB B3 electric trucks offer various energy packs (Lead-acid, Lithium-ion, and Fuel cell) to suit different application needs. CESAB's lithium-ion batteries provide exceptional battery life and fast opportunity charging, eliminating the need for battery changes in multi-shift operations. The high-performance version is the most energy-efficient, reducing energy consumption by up to 18% (versus previous model).

**ISD - Intelligent Stability Design**

All B3 electric trucks are standard equipped with CESAB's unique Intelligent Stability Design (ISD). It ensures excellent forklift stability by protecting the operator and load when driving, turning and lifting. ISD provides advanced technology increasing safety and improving productivity.

**IMD - Intelligent Mast Design**

All B3 electric trucks are available with CESAB's unique Intelligent Mast Design technology, which provides an industry leading level of visibility through the use of two off-set free lift cylinders. Further all piping, hoses and cables are integrated within the uprights.



# CESAB

## B4 - 4 WHEELS

Stability and versatility are key to the design of the B4 4-wheel electric counterbalanced truck. It delivers high performance with quick acceleration and lift/lower speeds, ideal on uneven floors, both indoors and outdoors. The truck provides drivers with advanced levels of comfort, a choice of energy-efficient power solutions (conventional lead-acid battery (LAB) or lithium-ion battery (LIB)), for low consumption and maximum productivity.

## SPECIFICATIONS

**Load capacity:** 1.6, 1.8, 2.0 t @ 500 mm load centre

**Maximum lift height:** 7.5 m

**Maximum travel speed:** 20 km/h

**Choice of energy solution:** Lead-acid (up to 750Ah), Lithium-ion (up to 630Ah)

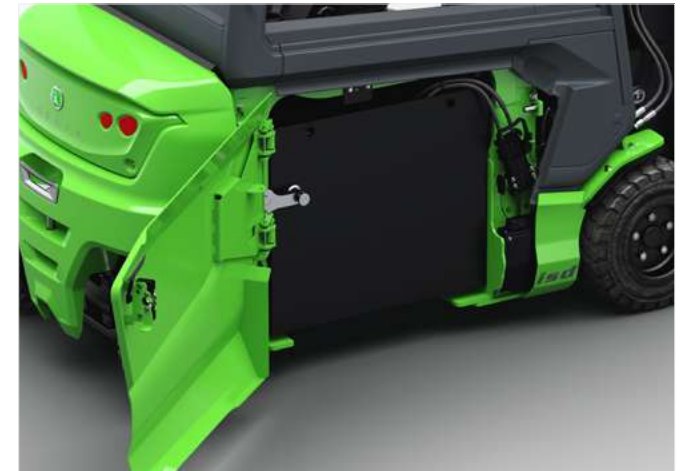
**Options available:**   

**isd**  
intelligent stability design





Display & lever options have been designed with the operator in mind for optimal comfort and productivity. The colour touchscreen display is both intuitive and interactive showing essential parameters and controls.



The standard B4 model equipped with lead acid battery has an open chassis design allowing for easy and quick lateral battery exchange/charging.



An enclosed cabin (option) offers comfort while working in any type of weather or lower temperatures.



Clear view on fork tips through all masts, transparent glass roof (optional) enables safe and efficient handling operations while increasing the driver's comfort and productivity.

● standard ○ option

**Load handling**

	Safety	Robustness	Performance	Durability	B4-16	B4-16L	B4-18L	B4-20	B4-20L
Wide Visible Mast (V)	●				●	●	●	●	●
Full-free (twin cylinder) 2-stage mast (FW) - IMD					○	○	○	○	○
Full-free (twin cylinder) 3-stage mast (FSW) - IMD					○	○	○	○	○
Full-free (central cylinder) 2-stage mast (FV)					○	○	○	○	○
Full-free (central cylinder) 3-stage mast (FSV)					○	○	○	○	○
Fully oil-charged lift cylinder		●			○	○	○	○	○
Shockless landing lift		●			●	●	●	●	●
Hydraulic cushioned forks					○	○	○	○	○
Hydraulic accumulator (full charge)					○	○	○	○	○
Integrated sideshift					○	○	○	○	○
Fork positioner					○	○	○	○	○
Quick couplings					○	○	○	○	○

**Lights and indicators**

	Safety	Robustness	Performance	Durability	B4-16	B4-16L	B4-18L	B4-20	B4-20L
LED front combination lights	●	●			○	○	○	○	○
LED rear combination lights					○	○	○	○	○
LED headlights	●				○	○	○	○	○
LED rear/double working light					○	○	○	○	○
Blue LED rear warning light					○	○	○	○	○
Yellow beacon (Flashing, Rotary)					○	○	○	○	○
Back-up buzzer	●				○	○	○	○	○
Horn in armrest	●				●	●	●	●	●

**Body**

	Safety	Robustness	Performance	Durability	B4-16	B4-16L	B4-18L	B4-20	B4-20L
Low and large step on left side + large hand grip	●	●			●	●	●	●	●
Hydraulic steering wheel					●	●	●	●	●
Digital multifunction display with wheel indicator					●	●	●	●	●
Multifunction touchscreen display	●	●			○	○	○	○	○
Mast tilt indicator	●				○	○	○	○	○
Load weight indicator	●				●	●	●	●	●
Adjustable tilt steering column with memory function					●	●	●	●	●
Wet disk brakes		●			●	●	●	●	●
Rear view mirror, left and right side	●				○	○	○	○	○
Flat/Panoramic internal rear view mirror					○	○	○	○	○
Seat mounted hydraulic minilevers inc. Fork levelling switch					●	●	●	●	●
Seat mounted Multifunction Lever inc. Fork levelling switch					○	○	○	○	○
Multifunction Joystick					○	○	○	○	○
Car pedal layout with brake pedal					●	●	●	●	●
D2 pedal					○	○	○	○	○
Adjustable telescopic steering column					○	○	○	○	○
Full floating driver's compartment		●			●	●	●	●	●
Battery door opening sensor	●				●	●	●	●	●
Double accel pedal					○	○	○	○	○
ORS seat (Operator Restrain System)					●	●	●	●	●
Fully adjustable fabric ORS seat	●	●			○	○	○	○	○
Shock sensor	●				○	○	○	○	○
Height selector	●				○	○	○	○	○
Pin code entry system / smart card reader	●				○	○	○	○	○
Automatic Parking Brake	●				●	●	●	●	●

● standard ○ option

**Body**

	Safety	Robustness	Performance	Durability	B4-16	B4-16L	B4-18L	B4-20	B4-20L
Heater	●				○	○	○	○	○
Tilt cylinder boots	●				○	○	○	○	○
Steel cabin	●				○	○	○	○	○
Cabin without doors					○	○	○	○	○
Canvas cabin					○	○	○	○	○
Front windshield with wiper & roof	●				○	○	○	○	○
Body guard	●				○	○	○	○	○
Rear assist grip with horn button	●				○	○	○	○	○

**Safety features**

	Safety	Robustness	Performance	Durability	B4-16	B4-16L	B4-18L	B4-20	B4-20L
CESAB ISD (Intelligent Stability Design)	●	●			●	●	●	●	●
Operator Presence Sensing System (OPS)					●	●	●	●	●
Max speed and acceleration reduction with lifted load					○	○	○	○	○
Emergency stop button in armrest	●				●	●	●	●	●

**Maintenance & management features**

	Safety	Robustness	Performance	Durability	B4-16	B4-16L	B4-18L	B4-20	B4-20L
Rugged exterior body and easy access for maintenance		●			○	○	○	○	○

**Battery management features**

	Safety	Robustness	Performance	Durability	B4-16	B4-16L	B4-18L	B4-20	B4-20L
Lateral battery extraction with open bottom chassis		●			○	○	○	○	○

**Special applications**

	Safety	Robustness	Performance	Durability	B4-16	B4-16L	B4-18L	B4-20	B4-20L
Cold storage model (TYPE 30S)		●			○	○	○	○	○
Rustproof model					○	○	○	○	○
Fisherman model		●			○	○	○	○	○
Drive in rack overhead guard					○	○	○	○	○
High overhead guard					○	○	○	○	○
Low overhead guard					○	○	○	○	○

**Unparalleled performance**

The StaminaTune from CESAB enables energy consumption reduction and enhanced performance thanks to the combination of IPM (Interior Permanent Magnet) synchronous motor for traction and our advanced controllers. Additionally, the optional high-performance motor for lifting allows for extra productivity and extra energy efficiency.

**Driver comfort**

Operator comfort is key to maximising productivity. The CESAB B4 features a fully floating driver compartment that reduces vibrations. Operators can enjoy a comfortable driving position with extra leg and foot space, a slim steering wheel, and an optional intuitive touchscreen that provides important information at a glance. Additionally, the design offers open visibility through the roof and mast.

**Energy efficiency**

CESAB B4 electric trucks offer various energy packs (Lead-acid, Lithium-ion, and Fuel cell) to suit different application needs. CESAB's lithium-ion batteries provide exceptional battery life and fast opportunity charging, eliminating the need for battery changes in multi-shift operations. The high-performance version is the most energy-efficient, reducing energy consumption by up to 18% (versus previous model).

**ISD - Intelligent Stability Design**

All B4 electric trucks are standard equipped with CESAB's unique Intelligent Stability Design (ISD). It ensures excellent forklift stability by protecting the operator and load when driving, turning and lifting. ISD provides advanced technology increasing safety and improving productivity.

**IMD - Intelligent Mast Design**

All B4 electric trucks are available with CESAB's unique Intelligent Mast Design technology, which provides an industry leading level of visibility through the use of two off-set free lift cylinders. Further all piping, hoses and cables are integrated within the uprights.



# CESAB

## B3 - B4 *Li-ION*

The innovative B3 B4 Li-Ion with integrated lithium-ion battery are available in both 3 (1.6t and 2t) and 4-wheels (2t), delivering outstanding energy efficiency for both indoor and outdoor operations. The overall design and enhanced driver compartment offer class-leading comfort and ergonomics as well as high levels of productivity. The CESAB in-house lithium-ion technology enables low energy consumption, minimising downtime for seamless and cost-effective operations.

## SPECIFICATIONS

**Load capacity:** 1.6, 2.0 t @ 500 mm load centre

**Maximum lift height:** 7.5 m

**Maximum travel speed:** 20 km/h

**In-house lithium-ion batteries available:** 300 and 420Ah

**Options available:**   



**isd**  
intelligent stability design



StaminaTune from CESAB with the IPM (Interior Permanent magnet) motor combined with our advanced controllers, delivers enhanced performance, while minimising energy consumption.



Maintenance is hassle-free with easy access to key components, ensuring reduced service cost and minimal downtime.



Drivers of differing sizes can be comfortably seated thanks to the extra foot and leg space, slim steering column, and adjustable seating position.



Li-ion connector is easily accessible at the back of the truck, integrated in the counterweight which allows for quick opportunity charging, maximising up-time.

● standard ○ option

**Load handling**

	Safety	Robustness	Performance	Durability	B3-16-Li	B3-20-Li	B4-20L-Li
Wide Visible Mast (V)	●			●	●	●	●
Full-free (twin cylinder) 2-stage mast (FW) - IMD				○	○	○	
Full-free (twin cylinder) 3-stage mast (FSW) - IMD				○	○	○	
Full-free (central cylinder) 2-stage mast (FV)				○	○	○	
Full-free (central cylinder) 3-stage mast (FSV)				○	○	○	
Fully oil-charged lift cylinder		●			○	○	○
Shockless landing lift		●	●		●	●	●
Hydraulic cushioned forks					○	○	○
Hydraulic accumulator (full charge)					○	○	○
Integrated sideshift					○	○	○
Fork positioner					○	○	○
Quick couplings					○	○	○

**Lights and indicators**

	Safety	Robustness	Performance	Durability	B3-16-Li	B3-20-Li	B4-20L-Li
LED front combination lights	●	●			○	○	○
LED rear combination lights					○	○	○
LED headlights					○	○	○
LED rear/double working light					○	○	○
Blue LED rear warning light					○	○	○
Yellow beacon (Flashing, Rotary)					○	○	○
Back-up buzzer					○	○	○
Horn in armrest					●	●	●

**Body**

	Safety	Robustness	Performance	Durability	B3-16-Li	B3-20-Li	B4-20L-Li
Low and large step on left side + large hand grip	●	●	●		●	●	●
Electric Power steering inc. Steering synchronizer					●	●	○
Hydraulic steering wheel					○	○	●
Digital multifunction display with wheel indicator		●	●		●	●	●
Multifunction touchscreen display					○	○	○
Mast tilt indicator					○	○	○
Load weight indicator					●	●	●
Adjustable tilt steering column		●			●	●	●
Wet disk brakes		●			●	●	●
Rear view mirror, left and right side					○	○	○
Flat/Panoramic internal rear view mirror					○	○	○
Seat mounted hydraulic minilevers inc. Fork levelling switch					●	●	●
Seat mounted Multifunction Lever inc. Fork levelling switch					○	○	○
Multifunction Joystick					○	○	○
Car pedal layout with brake pedal					●	●	●
D2 pedal					○	○	○
Adjustable telescopic steering column					●	●	○
Full floating driver's compartment					●	●	●
Double accel pedal					○	○	○
ORS seat (Operator Restrain System)					●	●	●
Fully adjustable fabric ORS seat		●			○	○	○
Shock sensor					○	○	○
Height selector					○	○	○
Pin code entry system					○	○	○
Automatic Parking Brake					●	●	●
Heater		●			○	○	○

● standard ○ option

**Body**

	Safety	Robustness	Performance	Durability	B3-16-Li	B3-20-Li	B4-20L-Li
Tilt cylinder boots		●			○	○	○
Steel cabin	●				○	○	○
Cabin without doors					○	○	○
Canvas cabin					○	○	○
Front windshield with wiper & roof					○	○	○
Body guard					○	○	○
Rear assist grip with horn button					○	○	○

**Safety features**

	Safety	Robustness	Performance	Durability	B3-16-Li	B3-20-Li	B4-20L-Li
CESAB ISD (Intelligent Stability Design)	●	●	●	●	●	●	●
Operator Presence Sensing System (OPS)					●	●	●
Max speed and acceleration reduction with lifted load					○	○	○
Emergency stop button in armrest	●				●	●	●

**Maintenance & management features**

	Safety	Robustness	Performance	Durability	B3-16-Li	B3-20-Li	B4-20L-Li
Rugged exterior body and easy access for maintenance		●			○	○	○

**Battery management features**

	Safety	Robustness	Performance	Durability	B3-16-Li	B3-20-Li	B4-20L-Li
Easy access for charging plug on the counterweight			●		○	○	○

**Special applications**

	Safety	Robustness	Performance	Durability	B3-16-Li	B3-20-Li	B4-20L-Li
Cold storage model (TYPE 30S)		●	●		○	○	○
Rustproof model					○	○	○
Fisherman model					○	○	○
Drive in rack overhead guard					○	○	○
High overhead guard					○	○	○
Low overhead guard					○	○	○

**Designed around Li-Ion**

CESAB engineers did a tremendous work to integrate the li-ion battery, and other features in the design of the truck to make operators's daily task, even more ergonomic. This unique design creates more leg & feet space.

**Unparalleled performance**

The StaminaTune from CESAB enables energy consumption reduction and enhanced performance thanks to the combination of IPM (Interior Permanent Magnet) synchronous motor for traction and our advanced controllers. Additionally, the optional high-performance motor for lifting allows for extra productivity and extra energy efficiency.

**Lithium-ion Energy**

Our B3 B4 Li-Ion models, with an in-house integrated lithium-ion batteries offering very short charging time, suitable for high energy demanding applications or 2 shifts operations without battery charging. The li-ion connector is easily accessible at the back of the truck, integrated in the counterweight for quick and easy opportunity charging.

**ISD - Intelligent Stability Design**

All B3 B4 Li-Ion electric trucks are standard equipped with CESAB's unique Intelligent Stability Design (ISD). It ensures excellent forklift stability by protecting the operator and load when driving, turning and lifting. ISD provides advanced technology increasing safety and improving productivity.

**IMD - Intelligent Mast Design**

All B3 B4 i-Ion electric trucks are available with CESAB's unique Intelligent Mast Design technology, which provides an industry leading level of visibility through the use of two off-set free lift cylinders. Further all piping, hoses and cables are integrated within the uprights.



# CESAB

## B600II

The CESAB B600 is built for strength and durability. Designed to withstand the toughest environments, both indoors and outdoors. It delivers outstanding performance with zero emissions. Material handling operations will become safer, quieter, more comfortable and cost-effective thanks to B600. This range includes compact trucks that are ideal for manoeuvring in tight areas but there are also longer wheelbase models available that are ideal for handling larger loads. Lift capacities range from 2.0 up to 3.5 tonnes.

## SPECIFICATIONS

**Load capacity:** 2.0, 2.5, 3.0, 3.5 t @ 500 mm load centre

2.5 & 3t @ 600 mm load centre

**Maximum lift height:** 6.5 m

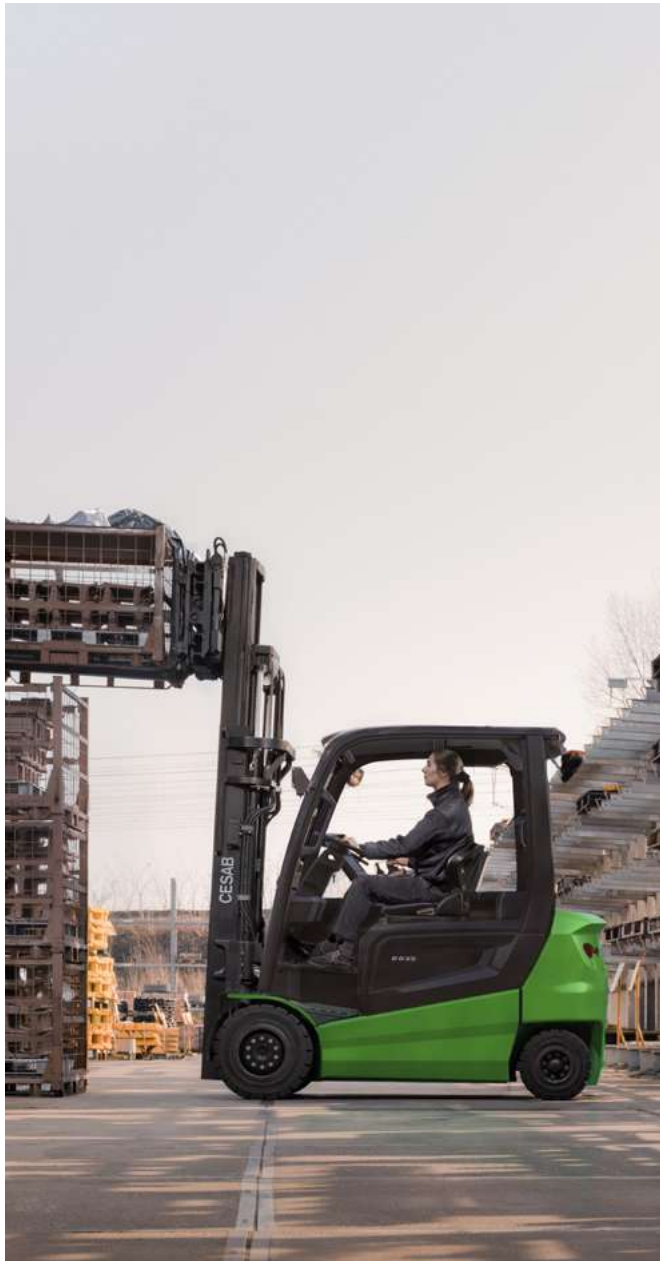
**Maximum travel speed:** 20 km/h

**Maximum battery capacity:** 775 Ah

Options available:   

**isd**  
intelligent stability design





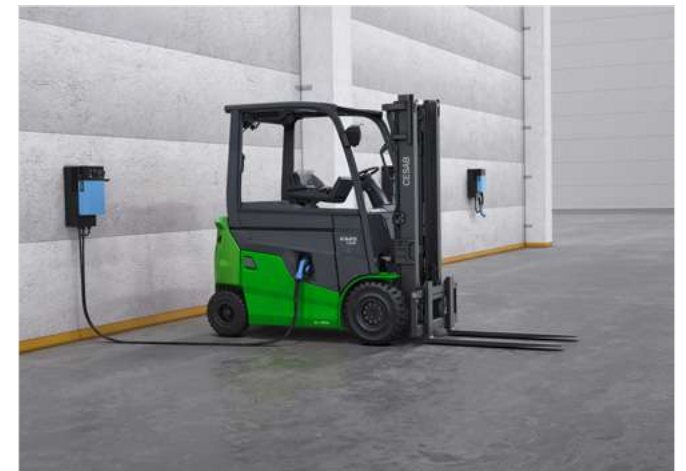
Ergonomically designed operator compartment featuring new armrest and palm support for optimal driver comfort.



Large colour touchscreen display providing vital information and contributing to driver's productivity.



Fully floating driver compartment insulates the driver from vibration and noise for enhanced comfort and productivity.



CESAB's latest intelligent energy packs, based on a range of lithium-ion batteries and chargers allow cost and energy savings.

● standard ○ option

**Load handling**

	Safety	Robustness	Performance	Durability	B620II	B625II	B625HLII	B630II	B630LII	B630HLII	B635II
Wide visible mast (V)	●				●	●	●	●	●	●	●
Full-free (twin cylinder) 2-stage mast (FW) - IMD					○	○	○	○	○	○	○
Full-free (twin cylinder) 3-stage mast (FSW) - IMD					○	○	○	○	○	○	○
Full-free (central cylinder) 2-stage mast (FV)					○	○	○	○	○	○	○
Full-free (central cylinder) 3-stage mast (FSV)					○	○	○	○	○	○	○
Fully oil-charged lift cylinder		●			○	○	○	○	○	○	○
Shockless landing lift		●	●		●	●	●	●	●	●	●
Tilt cylinder boots		●			○	○	○	○	○	○	○
Hydraulic cushioned forks incl. shockless landing lift					○	○	○	○	○	○	○
Hydraulic accumulator (full charge) incl. shockless landing lift	●				○	○	○	○	○	○	○
Integrated sideshift					○	○	○	○	○	○	○
Hook-on sideshift					○	○	○	○	○	○	○
Fork positioner					○	○	○	○	○	○	○
Quick couplings					○	○	○	○	○	○	○
High Performance Lift &Traction					○	○	○	○	○	○	○
High Performance Lift					○	○	●	○	○	●	○
Low noise Hydraulic system					○	○	●	○	○	●	○

**Lights and indicators**

	Safety	Robustness	Performance	Durability	B620II	B625II	B625HLII	B630II	B630LII	B630HLII	B635II
LED front combination lights (including headlights)	●	●			○	○	○	○	○	○	○
LED rear combination lights					○	○	○	○	○	○	○
LED headlights (incl. guard)					○	○	○	○	○	○	○
LED rear working light					○	○	○	○	○	○	○
LED double rear working light					○	○	○	○	○	○	○
Thin LED lights on mast					○	○	○	○	○	○	○
Additional LED headlights					○	○	○	○	○	○	○
Yellow beacon lamp					○	○	○	○	○	○	○
Back-up buzzer					○	○	○	○	○	○	○
Blue LED front warning light					○	○	○	○	○	○	○
Blue LED rear warning light					○	○	○	○	○	○	○
Horn in steering wheel					●	●	●	●	●	●	●
Horn in armrest					●	●	●	●	●	●	●

**Body**

	Safety	Robustness	Performance	Durability	B620II	B625II	B625HLII	B630II	B630LII	B630HLII	B635II
Low and large metal step on left-hand side + large hand grip	●	●	●		●	●	●	●	●	●	●
Full hydraulic power steering					●	●	●	●	●	●	●
Multifunction Display					●	●	●	●	●	●	●
Multifunction touchscreen display					○	○	○	○	○	○	○
Mast tilt indicator					○	○	○	○	○	○	○
Load weight indicator					●	●	●	●	●	●	●
Adjustable tilt steering column with memory function					●	●	●	●	●	●	●
Wet disc brakes		●			●	●	●	●	●	●	●
Rear view mirror, right and left sides					○	○	○	○	○	○	○
Flat internal rear view mirror					○	○	○	○	○	○	○
Panoramic rear view mirror					○	○	○	○	○	○	○
Seat mounted hydraulic minilevers					●	●	●	●	●	●	●
Multifunction levers					○	○	○	○	○	○	○
Multifunction joystick					○	○	○	○	○	○	○
Car pedal layout					●	●	●	●	●	●	●
D2 pedal (2 pedals)					○	○	○	○	○	○	○

● standard ○ option

**Body**

	Safety	Robustness	Performance	Durability	B620II	B625II	B625HLII	B630II	B630LII	B630HLII	B635II
Double accel pedal					○	○	○	○	○	○	○
ORS seat (Operator Restraint System)	●	●			●	●	●	●	●	●	●
Fully adjustable fabric ORS seat					○	○	○	○	○	○	○
Swivel seat					○	○	○	○	○	○	○
Height selector					○	○	○	○	○	○	○
Pin code entry system					○	○	○	○	○	○	○
Automatic parking brake					●	●	●	●	●	●	●
Heater					○	○	○	○	○	○	○
Full floating driver compartment					●	●	●	●	●	●	●
Steel cabin					○	○	○	○	○	○	○
Cabin without doors					○	○	○	○	○	○	○
Canvas cabin					○	○	○	○	○	○	○
Front windshield with wiper & roof					○	○	○	○	○	○	○
Rear assist grip with horn button					○	○	○	○	○	○	○
Document box					○	○	○	○	○	○	○

**Safety features**

	Safety	Robustness	Performance	Durability	B620II	B625II	B625HLII	B630II	B630LII	B630HLII	B635II
CESAB ISD (Intelligent Stability Design)	●	●	●		●	●	●	●	●	●	●
OPS (Operator Presence System)					●	●	●	●	●	●	●
Maximum drive speed and acceleration reduction with lifted load					○	○	○	○	○	○	○
Emergency stop button in armrest					●	●	●	●	●	●	●
Rear view camera					○	○	○	○	○	○	○

**Maintenance**

	Safety	Robustness	Performance	Durability	B620II	B625II	B625HLII	B630II	B630LII	B630HLII	B635II
<b>&amp; management features</b>											
Rugged exterior body and easy access for maintenance		●			●	●	●	●	●	●	●

**Battery management features**

	Safety	Robustness	Performance	Durability	B620II	B625II	B625HLII	B630II	B630LII	B630HLII	B635II
Open chassis for easy battery exchange					●	●	●	●	●	●	●
Battery stand/dock					○	○	○	○	○	○	○

**Special applications**

	Safety	Robustness	Performance	Durability	B620II	B625II	B625HLII	B630II	B630LII	B630HLII	B635II
Rustproof version					○	○	○	○	○	○	○
Fisherman specifications					○	○	○	○	○	○	○
Cold storage (Type 30S: -30°C)					○	○	○	○	○	○	○
Drive unit protector					○	○	○	○	○	○	○
High overhead guard					○	○	○	○	○	○	○

**Delivering performance**

The CESAB B600II is built for strength and durability. Designed to withstand the toughest environments, both indoors and outdoors. It delivers outstanding performance with zero emissions. The range includes compact chassis models for easy maneuvering as well as longer wheelbase models to handle larger loads.

**Unique driver experience**

The driver compartment has been ergonomically designed around the operator. The armrest includes an optional touchscreen display with vital information as well as ergonomics controls with a choice of levers to suit every operator. All of this contributes to drivers' comfort and productivity.

**Intelligent energy packs**

CESAB B600II electric trucks are available with two different intelligent energy packs to fit every customer's application requirements. Both are based on CESAB's own energy-efficient lithium-ion battery solutions, allowing your operation to cut costs and reduce CO2 emissions.

**ISD - Intelligent Stability Design**

All B600II electric trucks are standard equipped with CESAB's unique Intelligent Stability Design (ISD). It ensures excellent forklift stability by protecting the operator and load when driving, turning and lifting. ISD provides advanced technology increasing safety and improving productivity.

**IMD - Intelligent Mast Design**

All B600II electric trucks are available with CESAB's unique Intelligent Mast Design technology, which provides an industry leading level of visibility through the use of two off-set free lift cylinders. Further all piping, hoses and cables are integrated within the uprights.



# CESAB

## B6

With five configurations, from 3.5 to 5.0 tonnes, and a choice of compact or standard models, the truck adjusts effortlessly to varying space, load and application demands. Indoors or outdoors, it delivers the right balance of capability and comfort. Paired with lead-acid or lithium-ion battery options, CESAB B6 trucks provide the flexibility needed to keep your operations moving efficiently.

## SPECIFICATIONS

**Load capacity:** 4.0t @ 500 mm load center

3.5, 4.0, 4.5, 5.0t @ 600 mm load center

**Maximum lift height:** 6.5 m

**Maximum travel speed:** 20 km/h

**Maximum battery capacity:** 930 Ah

Options available: **imd**  

**isd**  
intelligent stability design





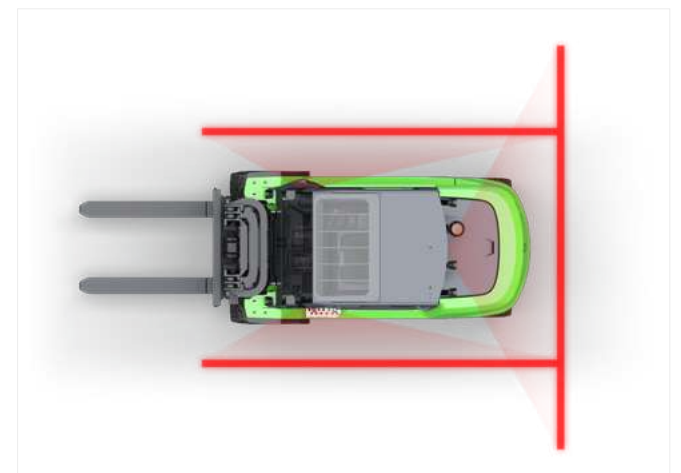
Ergonomic armrest with choice of minilevers to match your driving style.



Large colour touchscreen display providing vital information and contributing to driver's productivity.



Easy service access via removable counterweight lid, reducing cost and downtime.



Wide choice of working and safety lights, including lateral red lights, a warning system that projects T-shaped lights onto the ground.

● standard ○ option

**Load handling**

	Safety	Robustness	Performance	Durability	B6-35H	B6-40	B6-40HL	B6-45HL	B6-50HL
Wide Visible Mast (V)	●				●	●	●	●	●
Full-free (twin cylinder) 2-stage mast (FW) - IMD				○	○	○	○	○	○
Full-free (twin cylinder) 3-stage mast (FSW) - IMD				○	○	○	○	○	○
Full-free (central cylinder) 2-stage mast (FV)				○	○	○	○	○	○
Full-free (central cylinder) 3-stage mast (FSV)				○	○	○	○	○	○
Fully oil-charged lift cylinder		●			○	○	○	○	○
Shockless landing lift		●			●	●	●	●	●
Hydraulic cushioned forks		●			○	○	○	○	○
Hydraulic accumulator (full charge)					○	○	○	○	○
Integrated sideshift					○	○	○	○	○
Fork positioner					○	○	○	○	○
Quick couplings					○	○	○	○	○

**Lights and indicators**

	Safety	Robustness	Performance	Durability	B6-35H	B6-40	B6-40HL	B6-45HL	B6-50HL
Rear combination lights (LED)	●	●			○	○	○	○	○
Headlights (STD/LED)	●				○	○	○	○	○
Rear/double working light (STD/LED)					○	○	○	○	○
Blue LED rear warning light					○	○	○	○	○
Yellow beacon (Flashing, Rotary)					○	○	○	○	○
Lateral safety red lights					○	○	○	○	○
Back-up buzzer					○	○	○	○	○
Horn in steering wheel					●	●	●	●	●
Horn in armrest					○	○	○	○	○

**Body**

	Safety	Robustness	Performance	Durability	B6-35H	B6-40	B6-40HL	B6-45HL	B6-50HL
Low and large step on both sides + large hand grip	●	●			●	●	●	●	●
Full hydraulic power steering					●	●	●	●	●
Digital multifunction display with wheel indicator					●	●	●	●	●
Multifunction touchscreen display					○	○	○	○	○
Mast tilt indicator					●	●	●	●	●
Load weight indicator					●	●	●	●	●
Adjustable tilt steering column with memory function					●	●	●	●	●
Wet disk brakes		●			●	●	●	●	●
Rear view mirror, left and right side					○	○	○	○	○
Flat/Panoramic internal rear view mirror					○	○	○	○	○
Seat mounted hydraulic minilevers inc. Fork levelling switch					●	●	●	●	●
Seat mounted Multifunction Lever inc. Fork levelling switch					○	○	○	○	○
Multifunction Joystick					○	○	○	○	○
Car pedal layout with wide brake pedal					●	●	●	●	●
D2 pedal					○	○	○	○	○
Double accel pedal					○	○	○	○	○

● standard ○ option

**Body**

	Safety	Robustness	Performance	Durability	B6-35H	B6-40	B6-40HL	B6-45HL	B6-50HL
ORS seat (Operator Restrain System)	●				●	●	●	●	●
Fully adjustable fabric ORS seat		●			○	○	○	○	○
Swivel seat					○	○	○	○	○
Shock sensor					○	○	○	○	○
Height selector					○	○	○	○	○
Pin code entry system					○	○	○	○	○
Automatic Parking Brake					○	○	○	○	○
Heater					○	○	○	○	○
Tilt cylinder boots					○	○	○	○	○
Steel cabin					○	○	○	○	○
Cabin without doors					○	○	○	○	○
Canvas cabin					○	○	○	○	○
Front windshield with wiper & roof					○	○	○	○	○
Lowered overhead guard with/without cabin					○	○	○	○	○
Body guard					○	○	○	○	○
Rear assist grip with horn button					○	○	○	○	○
A4 size binder					○	○	○	○	○
Pneumatic tyres					○	○	○	○	○

**Safety features**

	Safety	Robustness	Performance	Durability	B6-35H	B6-40	B6-40HL	B6-45HL	B6-50HL
CESAB ISD (Intelligent Stability Design)	●	●			●	●	●	●	●
Glass roof (with/without wiper)					○	○	○	○	○
Operator Presence Sensing System (OPS)					●	●	●	●	●
Max speed and acceleration reduction with lifted load					○	○	○	○	○
Emergency stop button in armrest					●	●	●	●	●
Automatic parking brake					●	●	●	●	●

**Maintenance**

	Safety	Robustness	Performance	Durability	B6-35H	B6-40	B6-40HL	B6-45HL	B6-50HL
<b>&amp; management features</b>									
Rugged exterior body and easy access for maintenance		●			○	○	○	○	○

**Battery management features**

	Safety	Robustness	Performance	Durability	B6-35H	B6-40	B6-40HL	B6-45HL	B6-50HL
Open chassis for easy battery exchange					●	●	●	●	●
Battery stand/dock		●			●	●	●	●	●

**Special applications**

	Safety	Robustness	Performance	Durability	B6-35H	B6-40	B6-40HL	B6-45HL	B6-50HL
Cold storage model (TYPE 30S)		●	●		○	○	○	○	○
Rustproof model					○	○	○	○	○
Fisherman model					○	○	○	○	○
High Performance (80/90V) - IP54		●	●		○	○	○	○	○

**Exceptional energy efficiency**

The CESAB B6 sets the industry benchmark for energy efficiency which, combined with a choice of high-capacity batteries, means that long working shifts can be delivered without the need for battery change.

Extended operating time with low energy consumption, along with a choice of Li-ion or lead-acid power options to better match your application needs. Smooth operations with fast charging (LIB), easy battery exchange and possibility to charge from the back of the truck (LAB).

**Enhanced operator comfort & ergonomics**

CESAB full floating cabin significantly reduces noise and vibration, ensuring a smoother and more comfortable working environment. Generous legroom supports natural posture during long shifts, while the optional air conditioning system enhances operator well-being, even in demanding conditions.

**Built for long-lasting outdoor durability**

Designed to perform reliably in demanding outdoor environments, our forklifts feature an IP43 rating for enhanced protection against dust and water. Wide pneumatic tyres ensure stable traction on uneven surfaces, while Toyota's TPS quality system guarantees long-term durability and performance in every application.

**Choose your power**

The 80V battery, ideal for efficient, high-frequency operations or the High-Performance configuration option with a 90V battery, which features an IP54 high-performance motor, up to 12% energy savings, more speed (20km/h), more gradeability and up to 30% lifting speed increase, delivering the extra muscle and durability needed for intense outdoor challenges.



# CESAB

## B800II

CESAB B800II is the class-leading high-performance and high-capacity truck for heavy-duty work, offering a quiet, efficient and powerful electric alternative to IC trucks.

Its tough design is suited for multi-load handling and large attachments.

Typical applications include manufacturing, construction materials, and the paper and beverage industries.

## SPECIFICATIONS

**Load capacity:** 6.0, 7.0, 8.0 t @ 600 mm load centre - 8.0 t @ 900 mm load centre

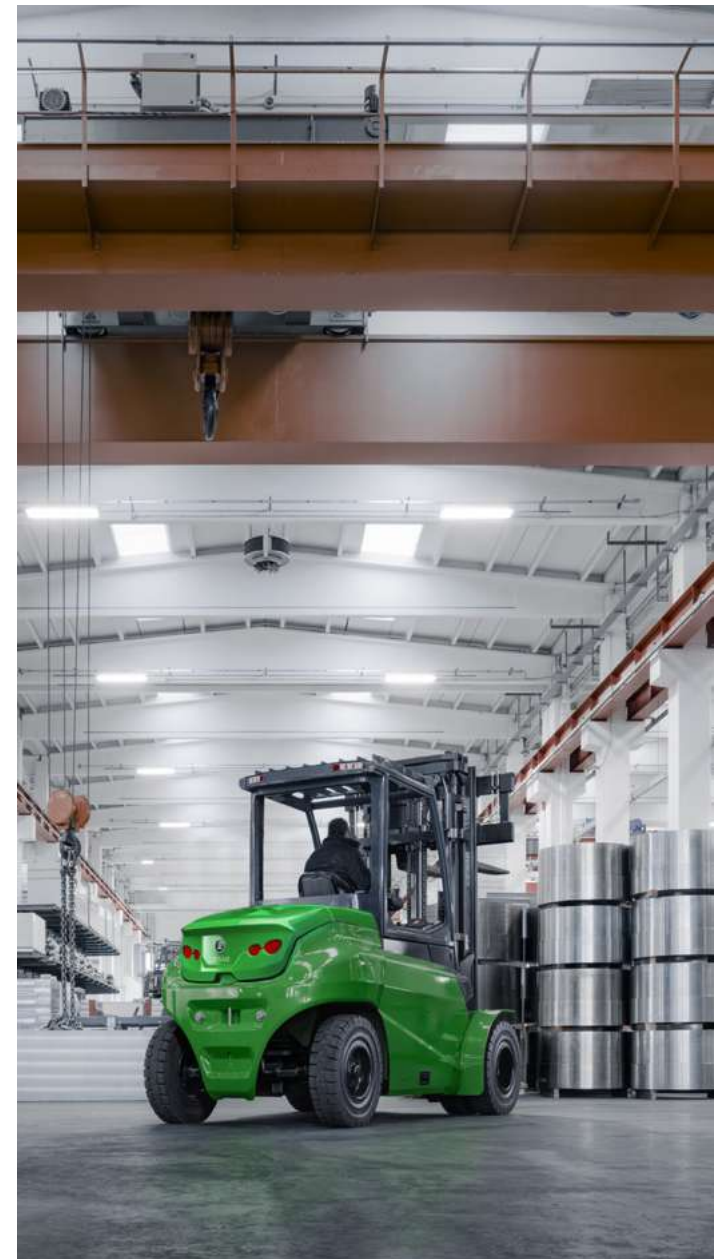
**Maximum lift height:** 7 m

**Maximum travel speed:** 20 km/h

**Maximum battery capacity:** 1240 Ah

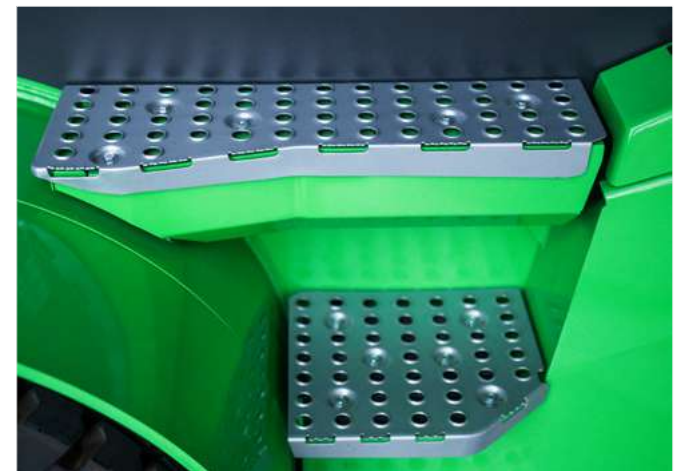
**Options available:**  

**isd**  
intelligent stability design

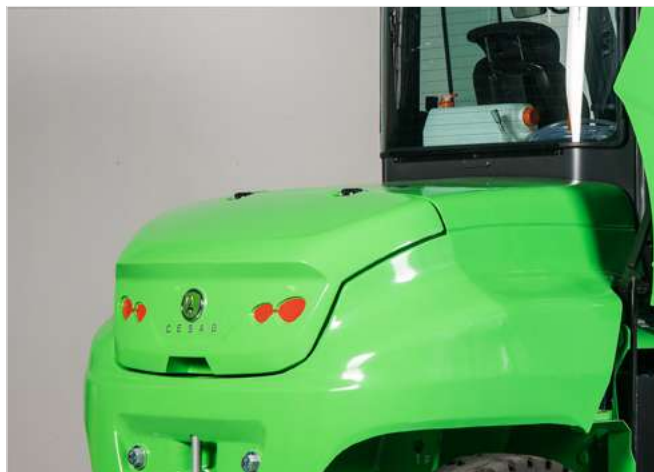




The spacious full floating driver compartment with minimal vibration and low noise offers the driver a comfortable work space.



Large entry window with wide steps and double driver assist grips ensure fatigue is minimised in applications that require repeatedly getting in and out.



Easy access to main service components.



Open chassis design with side panel facilitates lateral battery exchange.

● standard ○ option

**Load handling**

	Safety	Robustness	Performance	Durability	B860II	B870II	B880II	B880HII
Wide Visible mast (V)	●			●	●	●	●	●
Full-Free Lift Two-Stage Mast (FV)				○	○	○	○	○
Full-Free Lift Three-Stage Mast (FSV)				○	○	○	○	○
Shockless landing lift		●	●	●	●	●	●	●
Fully oil charged lift cylinder				○	○	○	○	○
Hydraulic accumulator (full charge)				○	○	○	○	○
Hooked-on sideshift				○	○	○	○	○
Integrated sideshift				○	○	○	○	○
Fork positioner				○	○	○	○	○
Quick couplings				○	○	○	○	○

**Lights and indicators**

Front combination lights (LED)	●			○	○	○	○	○
Rear combination lights (LED)				○	○	○	○	○
Headlights (LED)				○	○	○	○	○
Rear (double) working light (LED)				○	○	○	○	○
Yellow beacon (Flashing, Rotary)				○	○	○	○	○
Blue LED rear warning light				○	○	○	○	○
Back-up buzzer				○	○	○	○	○
Horn in steering wheel				●	●	●	●	●
Horn in armrest				○	○	○	○	○

**Body**

Large steps on left side - large double hand grips	●	●	●	●	●	●	●	●
Electric power steering incl. Steering synchroniser	○	○	○	○	○	○	○	○
Wet disk brakes	○	○	○	○	○	○	○	○
Automatic parking brake	○	○	○	○	○	○	○	○
Digital multifunction display with wheel indicator	○	○	○	○	○	○	○	○
Digital multifunction display Deluxe	○	○	○	○	○	○	○	○
Mast tilt indicator	○	○	○	○	○	○	○	○
Load weight indicator	○	○	○	○	○	○	○	○
Rear view mirrors, left and right side	○	○	○	○	○	○	○	○
Flat / Panoramic internal rear view mirror	○	○	○	○	○	○	○	○
Steel cabin	○	○	○	○	○	○	○	○
Cabin without doors	○	○	○	○	○	○	○	○
Front windshield with wiper & glass roof	○	○	○	○	○	○	○	○
Body guard	○	○	○	○	○	○	○	○
Heater	○	○	○	○	○	○	○	○
Seat mounted hydraulic minilevers inc. Fork levelling switch	○	○	○	○	○	○	○	○
Seat mounted Multifunction Lever inc. Fork levelling switch	○	○	○	○	○	○	○	○

● standard ○ option

**Body**

Seat mounted Multifunction Joystick				○	○	○	○	○
Left hand shift lever				○	○	○	○	○
Car pedal layout with wide brake pedal				○	○	○	○	○
D2 pedal				○	○	○	○	○
Double accel pedal				○	○	○	○	○
ORS (Operator Restrain System)	○	○	○	○	○	○	○	○
Fully adjustable fabric ORS seat	○	○	○	○	○	○	○	○
Swivel seat	○	○	○	○	○	○	○	○
Height selector	○	○	○	○	○	○	○	○
Pin code entry system	○	○	○	○	○	○	○	○
Rear assist grip with horn button	○	○	○	○	○	○	○	○
Tilt cylinder boots	○	○	○	○	○	○	○	○
Front / Rear mudguards	○	○	○	○	○	○	○	○
Hydraulic oil cooler	○	○	○	○	○	○	○	○
Drive motors IP54	○	○	○	○	○	○	○	○

**Safety Features**

CESAB ISD (Intelligent Stability Design)	○	○	○	○	○	○	○	○
Operator Presence Sensing System (OPS)	○	○	○	○	○	○	○	○
Emergency stop button on dashboard	○	○	○	○	○	○	○	○
Maximum drive speed and acceleration reduction with lifted load	○	○	○	○	○	○	○	○

**Maintenance**

**& management features**

Rugged exterior body and easy access for maintenance	○	○	○	○	○	○	○	○
--	---	---	---	---	---	---	---	---

**Battery management features**

Open chassis design for lateral battery exchange	○	○	○	○	○	○	○	○
Battery stand for battery exchange	○	○	○	○	○	○	○	○
Powered pallet truck for battery exchange	○	○	○	○	○	○	○	○

**Special applications**

Cold storage (Type 30S)	○	○	○	○	○	○	○	○
Rustproof version	○	○	○	○	○	○	○	○
Fisherman specifications	○	○	○	○	○	○	○	○

**ISD - Intelligent Stability Design**

The unique Intelligent Stability Design (ISD) is the world's first active system for controlling forklift stability. By protecting the operator and load when driving, turning and lifting, ISD provides advanced technology increasing safety in the workplace and improving productivity. It includes: ISD Active Mast Tilt Angle Control, ISD Active Mast Tilt Speed Control, ISD Fork Levelling, ISD Active Steering Synchroniser, ISD Speed reduction when cornering.

**Big on performance & manoeuvrability**

The powerful motors provide the truck strong gradeability and high travel speed, making it highly suitable for demanding applications. With the sharp rear steering angle the truck can manoeuvre smoothly in tight areas for example in production or storage areas.

**Strong on efficiency**

The range comes with electric power steering for lower energy consumption and offers a choice in battery technology to suit all needs. For a smooth battery exchange, the truck is designed around an open chassis to easily place and retrieve the battery.

# CESAB

## Material Handling in Europe

---

### Total coverage

The CESAB Material Handling network extends to over 20 countries in Europe with a big service network.

### Always local – with global support

Wherever you are located in Europe, we are always close by, thanks to our extensive local coverage, but with the stability and backup of a worldwide organisation.

### Made in Europe

Over 95% of the trucks we sell, are built in our own European factories – all to TPS quality standards – and over 90% of the trucks sold are electrified. Available across Europe, our products are manufactured in France, Italy, and at one of the EU's first 'carbon-free' factories in Sweden. We employ over 3000 production staff throughout Europe and work with over 300 European suppliers.

