

**CESAB**

**spec sheet**

# CESAB S010i

**1.0t capacity**

Li-ion powered stacker

***Li-ION***



# S010i

## Truck Specifications

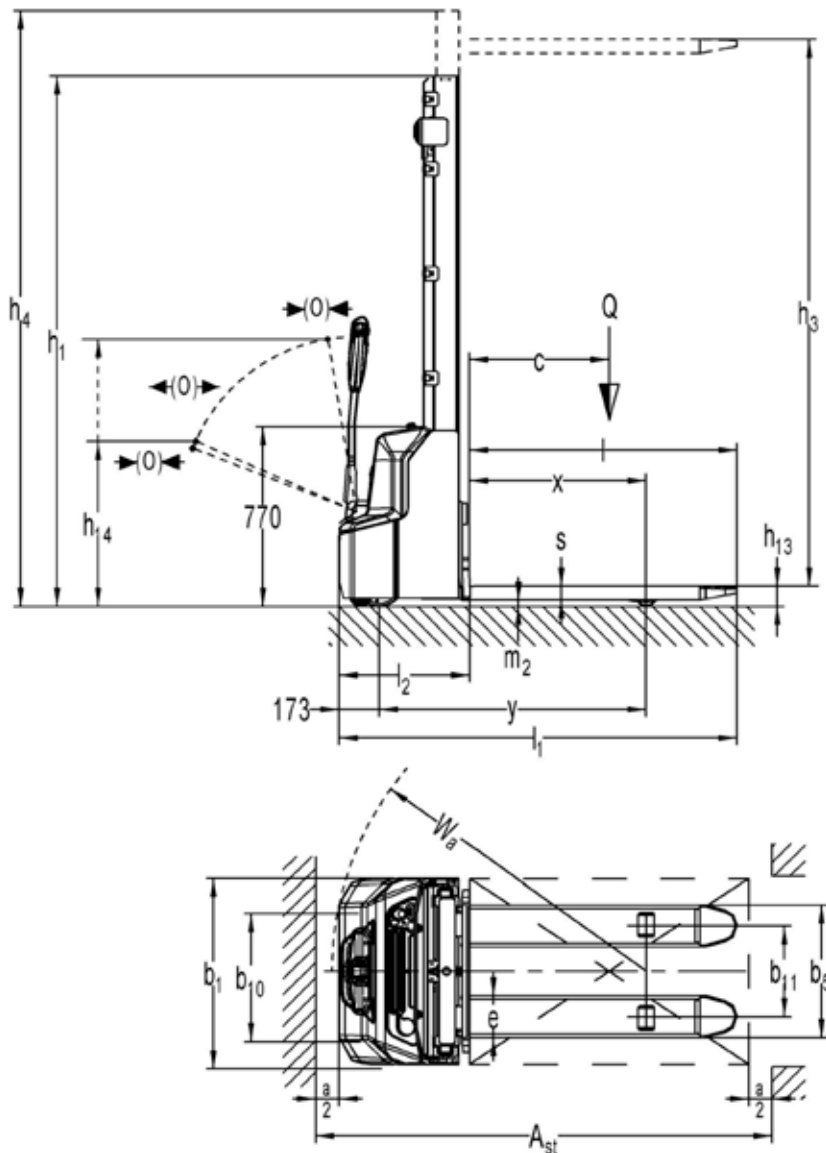
CHARACTERISTICS				
1.1	Manufacturer		CESAB	CESAB
1.2	Model designation		S010i - 290	S010i - 360
1.3	Drive		Battery (Li-ion)	Battery (Li-ion)
1.4	Operation		Pedestrian	Pedestrian
1.5	Load capacity	Q	[t]	1,0
1.6	Load centre distance	c	[mm]	600
1.8	Load distance, centre of support arm wheels to fork face	x	[mm]	760
1.9	Wheelbase	y	[mm]	1147
WEIGHT				
2.1	Service weight (battery included)		[kg]	565
2.2	Axle load, with load, front/rear		[kg]	565/1000
2.3	Axle load, without load, front/rear		[kg]	435/130
435				139
WHEELS AND TYRES				
3.1	Wheels			Polyurethane
3.2	Wheel size drive wheel	∅ x width		210 x 70
3.3	Wheel size load wheels	∅ x width		84 x 93
3.4	Wheel size castor wheel	∅ x width		100 x 50
3.5	Wheels, number front/rear (x = driven)			1x + 1/2
3.6	Track width, front	b <sub>10</sub>	[mm]	550
3.7	Track width, rear	b <sub>11</sub>	[mm]	400/515
DIMENSIONS				
4.2	Height, mast lowered	h <sub>1</sub>	[mm]	1930
4.3	Free lift	h <sub>2</sub>	[mm]	-
4.4	Lift	h <sub>3</sub>	[mm]	2814
	Lift height	h <sub>23</sub>	[mm]	2900
4.5	Height, mast extended	h <sub>4</sub>	[mm]	3337
4.9	Height of tiller arm in drive position, min. / max.	h <sub>14</sub>	[mm]	710/1150
4.15	Height, forks lowered	h <sub>13</sub>	[mm]	86
4.19	Overall length	l <sub>1</sub>	[mm]	1710
4.20	Length to face of forks	l <sub>2</sub>	[mm]	560
4.21	Overall width	b <sub>1</sub>	[mm]	800
4.22	Fork dimensions	s/e/l	[mm]	60x180x1150
4.25	Width over forks	b <sub>5</sub>	[mm]	570
4.32	Ground clearance, centre of wheelbase	m <sub>2</sub>	[mm]	30
4.34.1	Aisle width, pallets 1000x1200 crossways	A <sub>st</sub>	[mm]	2197
4.34.2	Aisle width, pallets 800x1200 lengthways	A <sub>st</sub>	[mm]	2145
4.35	Turning radius	W <sub>α</sub>	[mm]	1350
PERFORMANCES				
5.1	Travel speed, with/without load		[km/h]	4,2/4,5
5.2	Lift speed, with/without load		[m/s]	0,11/016
5.3	Lowering speed, with/without load		[m/s]	0,13/0,11
5.8	Max. gradeability, with/without load		[%]	5/10
5.10	Service brake			Electromagnetic
				Electromagnetic
ELECTRIC MOTORS				
6.1	Drive motor, rating S2 60 min.		[kW]	0,65
6.2	Lift motor, rating S3 7,5%		[kW]	2,2
6.4	Battery voltage, nominal capacity K <sub>s</sub>		[V/Ah]	24/60
6.5	Battery weight +/- 5%		[kg]	19
6.6	Energy consumption according to EN16796:2016		[kWh/h]	0,47
OTHERS				
8.1	Type of drive control			DC speed control
8.4	Sound level at driver's ear according to EN 12 053		[dB(A)]	< 70

Truck performance and dimensions are nominal and subject to tolerances.  
 Cesab Material Handling Europe products and specifications are subject to change without notice.

# S010i

## Dimensional Drawings

CESAB S010i			Duplex Tele	
$h_{23}$	Lift height ( $h_{13} + h_3$ )	mm	2900	3600
$h_3$	Lift	mm	2814	3514
$h_1$	Height, mast lowered	mm	1930	2280
$h_{23}$	Free lift, ground to top of forks	mm	-	-
$h_4$	Height, mast extended	mm	3337	4037





Contact your local CESAB dealer to get professional advice and personalised, local service tailored to your business

Your authorised CESAB dealer



The data in this specification sheet was determined based on our standard testing conditions. Operating performance may vary depending on the actual specification and condition of the truck as well as the condition of the operating area.

Availability and specifications are determined regionally and are subject to change without notice. Please consult your authorised CESAB dealership for further details.  
SPEC\_S010i\_EN\_2021 / Ucan V03 – Copyright CESAB Material Handling Europe.

